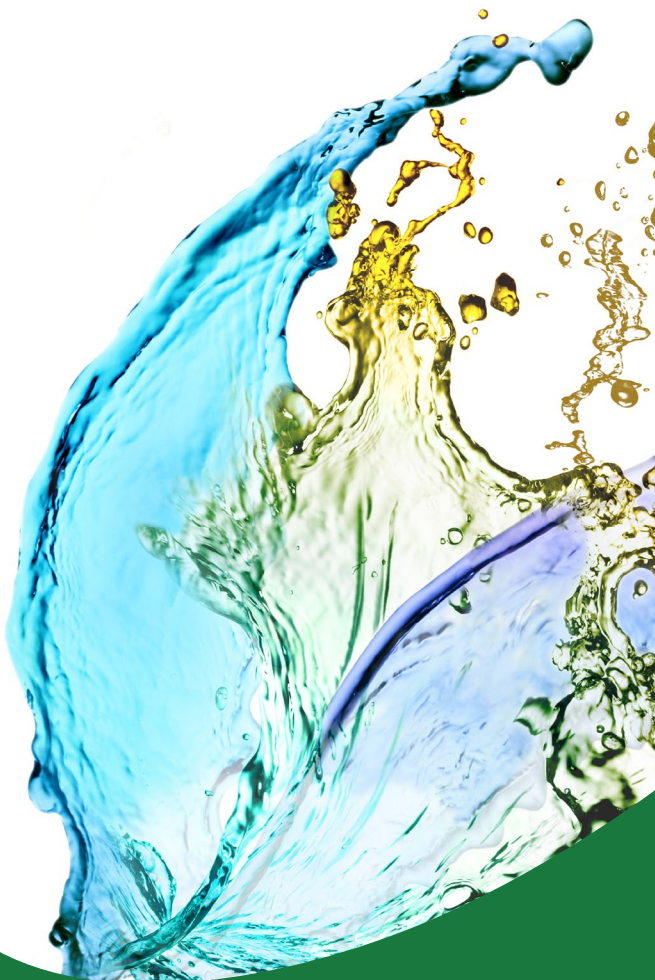




NEW WORLD
MEDICAL

Humanity's Vision Is Our Focus

Safe and Effective Treatment Options With Glaucoma Implants





The tube drains the fluid out of the eye, thus reducing eye pressure. The implant is placed outside the eye; however, it is covered by the skin of the eye, so it cannot be seen or felt.

When a Glaucoma Implant Is Chosen

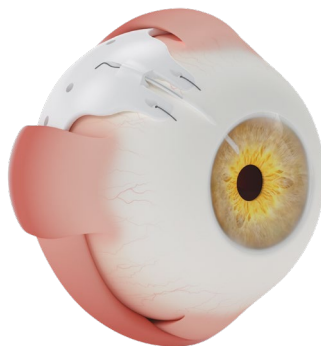
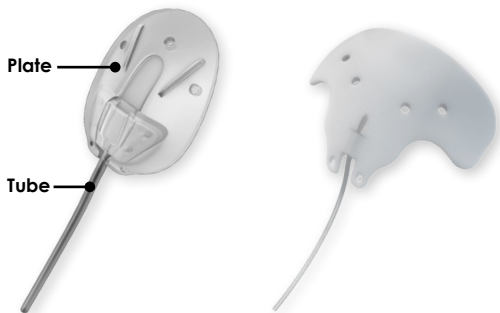
Glaucoma treatment is different for everyone. While medicine or laser surgery is common, it may eventually become less effective since glaucoma progresses over time. When this happens, a glaucoma implant may become necessary to help reduce and regulate pressure in your eye.

How Glaucoma Implants Work

A glaucoma implant consists of a small plate with a tube attached to it.

Ahmed® Glaucoma Valve

Ahmed ClearPath™



Fluid flows from the tube and out of the plate.

After Glaucoma Implant Surgery

You will likely be able to go home the day of the procedure and may receive eye drops and/or pain medication. Your eye doctor will schedule follow-up appointments and may recommend that you take a few days off work following the procedure. You should refrain from strenuous activities, such as playing sports or lifting heavy objects.

Ahmed implants provide effective, long-term control of intraocular pressure with a high success rate.

Is an Implant Right for Me?

There are many ways to reduce eye pressure, such as eye drops, laser procedures, or traditional surgery. Only your eye doctor can determine which treatment is best for you. Speak with your eye doctor if you have any questions about glaucoma or your treatment, or to find out if a glaucoma implant is right for you.



NEW WORLD
MEDICAL

New World Medical
10763 Edison Court
Rancho Cucamonga, CA 91730
(909) 466-4304

www.newworldmedical.com